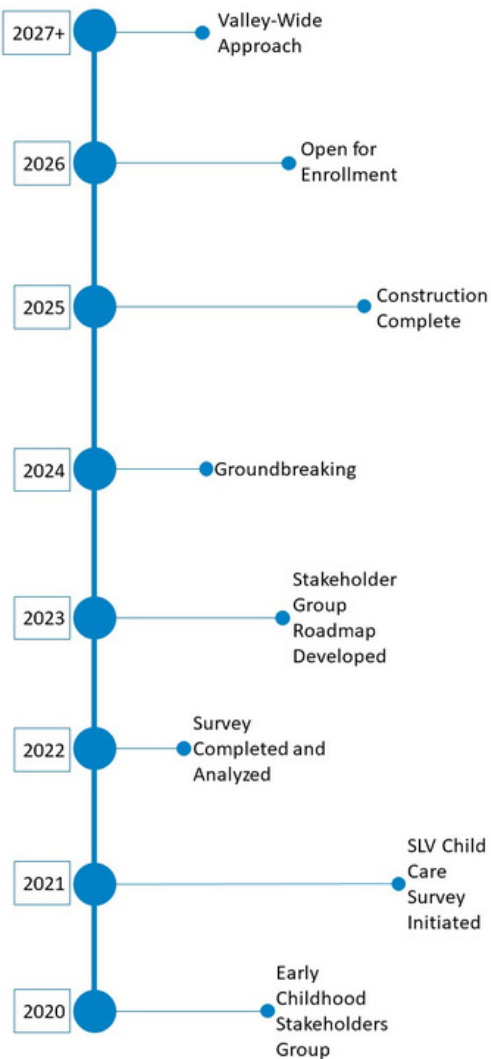


STEPS TO SUCCESS

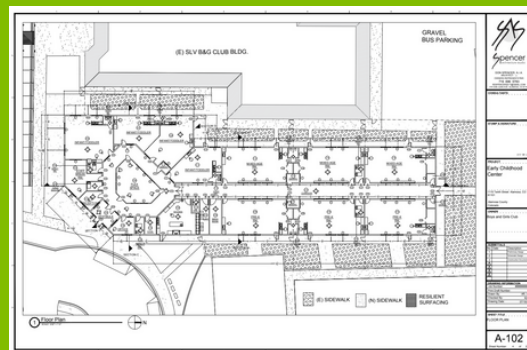
KEY MILESTONES



Over 80% of families surveyed responded that they would be likely or quite likely to use child care services if care was offered.



FROM OUR FAMILY TO YOURS, THANK YOU.



I have a 15-month old, I have definitely missed work for not having child care. I work the night shift and my partner works in the daytime. I have been trying to find child care that works for me without success. -- SLV Parent

BUILDING THE FUTURE OF THE SAN LUIS VALLEY



A CAMPAIGN FOR INCREASING ACCESS TO EARLY CHILDHOOD EDUCATION IN THE VALLEY



1115 Tenth Street
Alamosa, CO 81101

www.bgcsv.org
(719) 589-5252



The gap in access to high-quality child care for children under the age of six continues to increase in our community. The Boys & Girls Clubs of the San Luis Valley is leading a community-driven initiative to build solutions for families across the Valley.



MORE THAN A BUILDING

BENEFITS OVER TIME

Longer-term economic benefits are often highlighted for investments in early care and education, but there are many immediate and shorter-term benefits as well.



Every \$1 invested in high-quality ECE, increases property values up to \$13



Reduced need for K-12 special education saves an average of \$10,000 per year.



ECE programs can cover between 50% to 150% of their annual costs after 10 years.

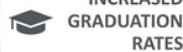


The first 5 years of life provide a lifelong foundation for all future outcomes.

A landmark study on the impact of early child care reports the following outcomes observed at 40
*Perry Preschool Project



HIGHER EARNINGS



INCREASED GRADUATION RATES



DECREASED TEEN PREGNANCY



INCREASED HOME OWNERSHIP



DECREASED CRIMES

BUILDING BRIGHTER FUTURES TODAY!

BGCSLV is proud to serve a community that bands together to ensure every person succeeds. In partnership with the Early Childhood Council of the SLV, we've developed a plan to move toward closing the gap in access to early child care.

This state-of-the-art facility will be built on the BGCSLV Alamosa Campus and serve up to 160 children, ages 0-6.



When open, the center will create 40+ jobs.

The ECLC will serve as a resource hub for developing valley ECL professionals.



The values that guide every step...

Partnering with families.

Quality education for those with the greatest need.

Lifting community voice.

The importance of early child care for the community.

Equitable access to early education.

Strengthening the child care workforce.

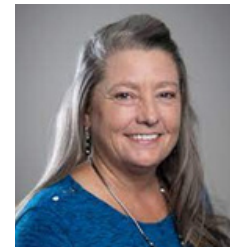
BY THE COMMUNITY FOR THE COMMUNITY

The BGCSLV is joined by a collaborative of leaders from across the Valley to make early child care more available and accessible.

- Early Childhood Council San Luis Valley
- Boys and Girls Clubs of the San Luis Valley
- Adams State University
- City of Alamosa
- Trinidad State College – ECE Department
- San Luis Valley Health
- Valley Wide Health Systems
- Alamosa School District
- Monte Vista School District
- Center for Restorative Programs
- First Southwest Community Fund
- Conejos County Housing Authority
- Alamosa Chamber of Commerce



Aaron Miltenberger
Boys & Girls Clubs SLV
President/CEO
aaron@bgcslv.org
(719) 850-1464



Sherri Valdez
Early Childhood Council SLV
Chief Executive Officer
sherri@eccslv.org
(719) 937-4010

Join the community-led effort to build a brighter tomorrow for Valley kids and families by supporting the Early Childhood Learning Center.



Contact us for more information about how you can help, or scan the QR code to **GIVE TODAY!**
www.bgcslv.org/ways-to-give